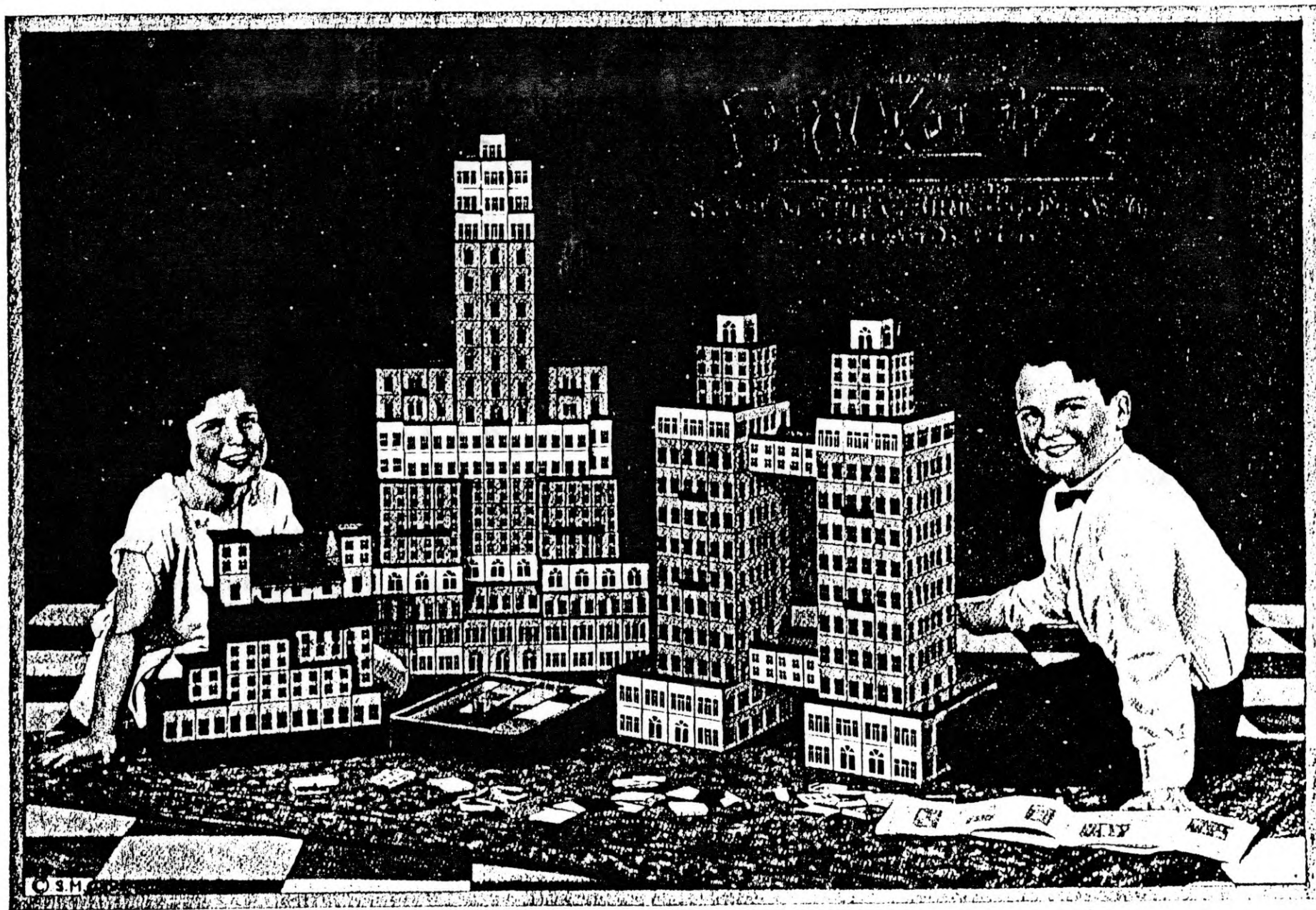


BILT-E-Z

U.S.A.

TYPE Architectural Display
 HOLE DIAMETER Not applic. HOLE SPACING Not applic.
 SETS IN SYSTEM Total of 8: 0.00,A,B,C,D,E,F. Earlier there were also sets G,H,AA & BB
 DIFFERENT PARTS 25
 COLOUR White, red, grey, Buff and Silver.
 FIXING METHOD The parts are fixed by means of a metal sandwich into which the ends of the other parts are fixed - there are no Nuts and Bolts.
 MOTORS None.
 PERIOD Patented in 1920, but it is thought to date from 1923 to 1929
 MANUFACTURER Scott Manufacturing Co, 1701 West 74th Street, Chicago, Ill. USA
 Until 1924, the address was 7400 South Ashland Avenue
 COMMENTS This system was designed purely for builing Architectural models of the Skyscraper type.
 In early sets the Balcony was 4" long. Sets AA and BB were called Structural Outfits and contained panels with a large centre cutout braced by diagonal members
 OTHER SYSTEMS 7/156, 14/378
 NEWSLETTER
 MATERIAL SUPPLIED BY: Clyde.T. Suttle



BILTEZ Architectural Outfits

BILT-E-Z PARTS

Bilt-E-Z parts are made in the following colors: White, Grey, Red, Buff and Silver. The walls, floors and windows are made uniform in size, being 2 inches square. Extra parts may be purchased from any toy shop at the prices shown on this page.

CORNICES



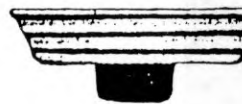
No. E

The cornices are made in different sizes and shapes. The one pictured above is called an "E" cornice and comes in three sizes and is numbered in the following manner:

- E-1..... 2³/₈ inches
- E-2..... 2⁵/₈ inches
- E-3..... 4¹/₄ inches
- E-1..... .03 ea.
- E-2..... .03 ea.
- E-3..... .03 ea.



No. 1



No. 2



No. 3

The cornices pictured above come in the three shapes shown and each shape is made in four sizes. The approximate sizes are as follows:

- | | | | |
|-------------------|-------------------|-------------------|-------------------|
| A-1..... 2 inches | B-1..... 4 inches | C-1..... 6 inches | D-1..... 8 inches |
| 2..... 2 inches | 2..... 4 inches | 2..... 6 inches | 2..... 8 inches |
| 3..... 2 inches | 3..... 4 inches | 3..... 6 inches | 3..... 8 inches |
| A-1..... .03 ea. | B-1..... .03 ea. | C-1..... .05 ea. | D-1..... .05 ea. |
| 2..... .03 ea. | 2..... .03 ea. | 2..... .05 ea. | 2..... .05 ea. |
| 3..... .03 ea. | 3..... .03 ea. | 3..... .05 ea. | 3..... .05 ea. |



Balcony
.05 ea

Friction or Connection
Part No. 2



.01 each, 10c per dozen
or 70c per box of 100



Window
No. 3
.03 ea. or
.70 per
box of 25



Window
No. 4
.03 ea. or
.70 per
box of 25



Wall
No. 5
.03 ea. or
.70 per
box of 25



Door
No. 6
.03 ea. or
.70 per
box of 25



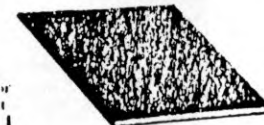
Window
No. 7
.03 ea. or
.70 per
box of 25



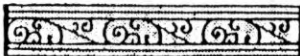
Window
No. 8
.03 ea. or
.70 per
box of 25



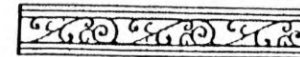
Window
No. 9
.03 ea. or
.70 per
box of 25



Floor
Part
No. 1
.03 ea. or
.70 per
box of 25



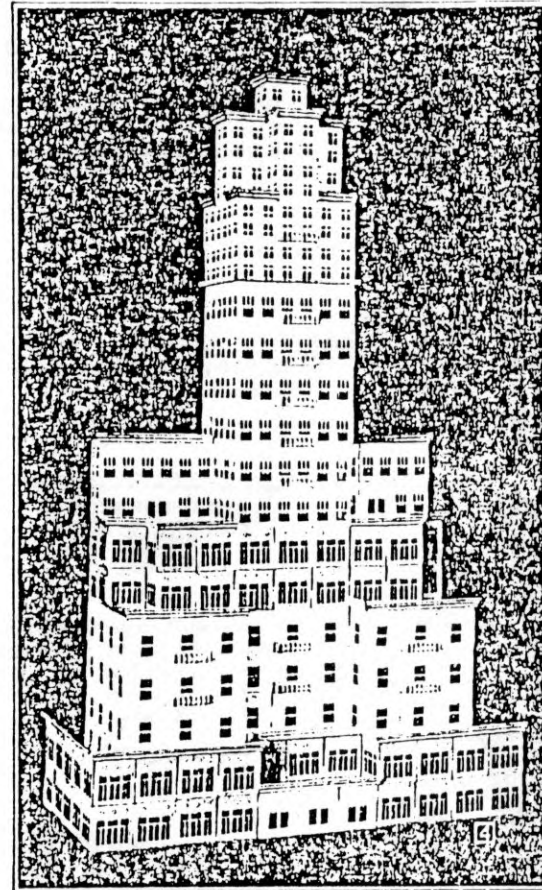
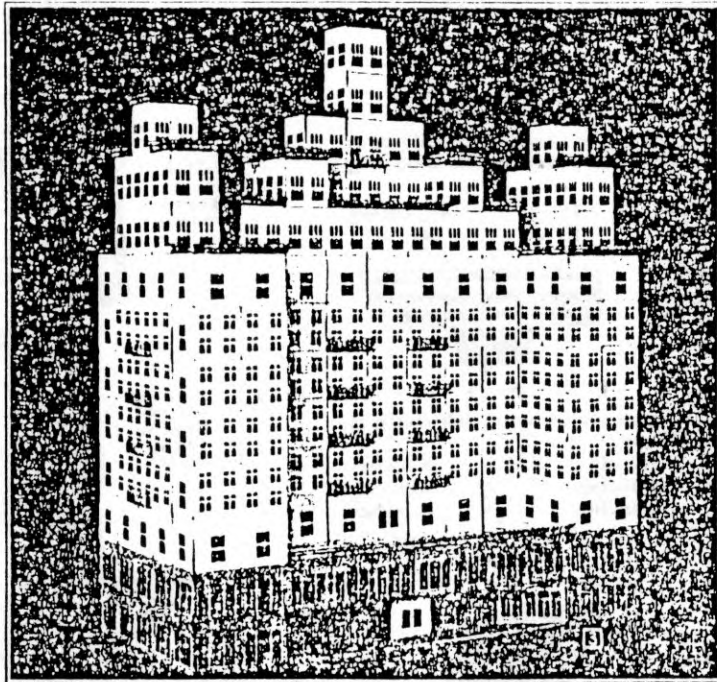
As The Boy Builds The Toy The Toy Builds The Boy



BILTEZ *Architectural Outfits*

Outfit No. F

parts of all the models are flat, with the exception of model 3. This building is five squares wide on the side and only two squares wide in the center. This is accomplished by building two squares back in the front as is shown and one square back in the rear.



The Ideal Toy For Girl or Boy

BILTEZ Architectural Outfits

Prices and Shipping Weights

	Price	Weight per set	Sets per Case	Weight per Case.
No. "O".....	\$1.00	1 lb. 6 oz.	100	155 lbs.
No. "OO".....	2.00	2 lb. 12 oz.	60	165 lbs.
No. "A".....	3.50	3 lb. 14 oz.	24	105 lbs.
No. "B".....	5.00	5 lb. 5 oz.	24	135 lbs.
No. "C".....	7.50	8 lb. 7 oz.	12	110 lbs.
No. "D".....	10.00	12 lb. 2 oz.	12	160 lbs.
No. "E".....	15.00	18 lb. 10 oz.	6	125 lbs.
No. "F".....	25.00	30 lb.	3	110 lbs.

Packed Assorted in Colors to Case unless Otherwise Specified.

PARTS—25c per box—\$3.00 per carton

PRICES WEST OF THE ROCKIES 10% ADDITIONAL

SCOTT MANUFACTURING COMPANY
1701 West 74th Street, CHICAGO, ILL.



The Ideal Toy For Girl or Boy

BILT-E-Z Architectural Outfits

PARTS



Packed 10 Parts of one Color in box (shown above). Weight 2 oz. Box $4\frac{1}{2}$ " long; $2\frac{1}{4}$ " wide; 1" deep. Cornices Nos. 11 and 12. Packed 2 A shape; 6-B shape; 2-C shape.



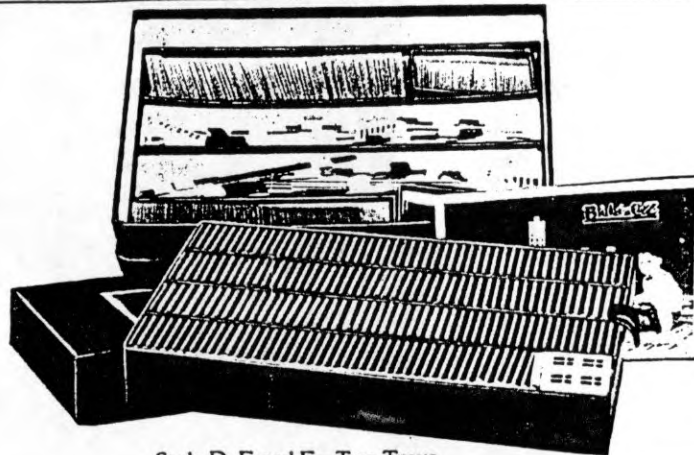
Carton contains 12 boxes (10 each) assorted colors. $12\frac{1}{4}$ " long; $2\frac{1}{2}$ " wide; $4\frac{1}{2}$ " deep. Weight 2 lbs.

PACKED IN SUBSTANTIAL ATTRACTIVE FOUR COLOR BOXES



Style 0 and 00

No. 0	No. 00
Box 10" long x $6\frac{3}{4}$ " wide x $7\frac{1}{8}$ " high.	Box $8\frac{1}{16}$ " long x $8\frac{1}{16}$ " wide x 1" high.
Floors... 14	Floors... 30
Frictions... 10	Frictions... 28
Walls... 10	Walls... 22
Windows... 23	Windows... 42
Doors... 2	Doors... 4
Cornices... 10	Cornices... 18
Balconies... 1	Balconies... 2
70 parts	146 parts
Also illustrated book of instructions.	Also illustrated book of instructions.



Style D, E and F—Two Trays

No. D	No. E	No. F
Box $13\frac{1}{4}$ " long x $9\frac{1}{2}$ " wide x 2" high.	Box $15\frac{3}{4}$ " long x $9\frac{1}{8}$ " wide x $4\frac{3}{4}$ " high.	Box 19" long x $14\frac{3}{4}$ " wide x 5" high.
Floors... 152	Floors... 255	Floors... 411
Friction... 232	Friction... 316	Frictions... 530
Walls... 85	Walls... 140	Walls... 240
Windows... 176	Windows... 240	Windows... 425
Doors... 14	Doors... 20	Doors... 25
Cornices... 64	Cornices... 112	Cornices... 174
Balconies... 10	Balconies... 16	Balconies... 20
733 parts	1099 parts	1825 parts
Also illustrated book of instructions.	Also illustrated book of instructions.	Also illustrated book of instructions.



Style A B and C

No. A
Box— $11\frac{1}{16}$ " long x $8\frac{9}{16}$ " wide x $1\frac{1}{16}$ " high.
Floors... 45
Frictions... 90
Walls... 33
Windows... 58
Doors... 6
Cornices... 24
Balconies... 3
259 parts

Also illustrated book of instructions.

No. B
Box— $13\frac{3}{16}$ " long x $8\frac{5}{8}$ " wide x $1\frac{1}{16}$ " high.
Floors... 72
Frictions... 110
Walls... 37
Windows... 92
Doors... 8
Cornices... 40
Balconies... 4
363 parts

Also illustrated book of instructions.

No. C
Box— $15\frac{3}{4}$ " long x $8\frac{11}{16}$ " wide x $1\frac{1}{8}$ " high.
Floors... 110
Frictions... 150
Walls... 50
Windows... 127
Doors... 12
Cornices... 56
Balconies... 8
513 parts

Also illustrated book of instructions.

As The Boy Builds The Toy The Toy Builds The Boy