

AIRFIX



**Betta
Bilda**



BUILDING SETS

GIVE HOURS AND HOURS OF PLEASURE TO CHILDREN OF ALL AGES!

HOW TO GET MOST FUN OUT OF YOUR BETTA BILDA?



This is the Starter Pack



Start by making some of the smaller buildings illustrated in this folder. First lay out your base. Then begin building the walls, interlocking the bricks as shown below. Before putting windows and doors into position, be sure you snap in the correct sized panes. You can choose a variety of roofs, but be sure to press each tile firmly home as you go along. Clever use of your red and white bricks helps you get more interesting designs. And Betta Bilda accessory packs enable you to create more ambitious projects. All components are scaled so that buildings may be produced for inclusion in HO and OO scale railway layouts.

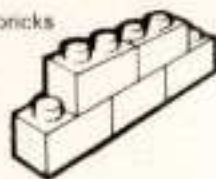
— ideal for those just beginning.

See how the units interlock.

Gable ends

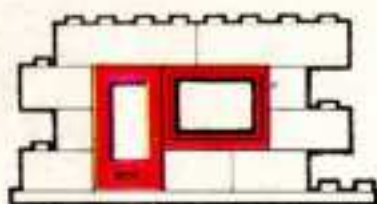


Interlocking bricks



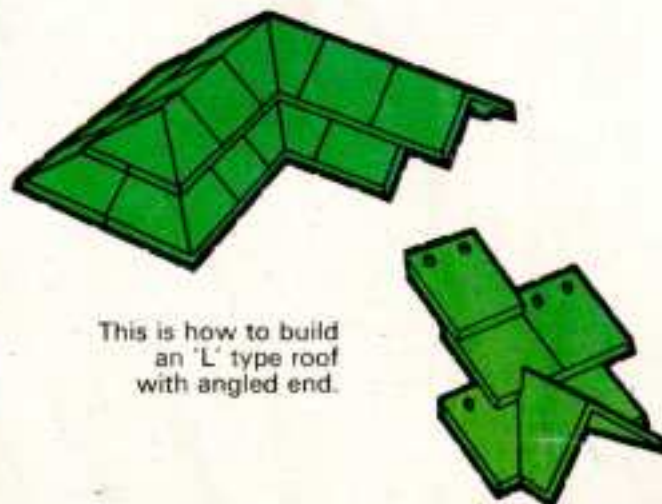
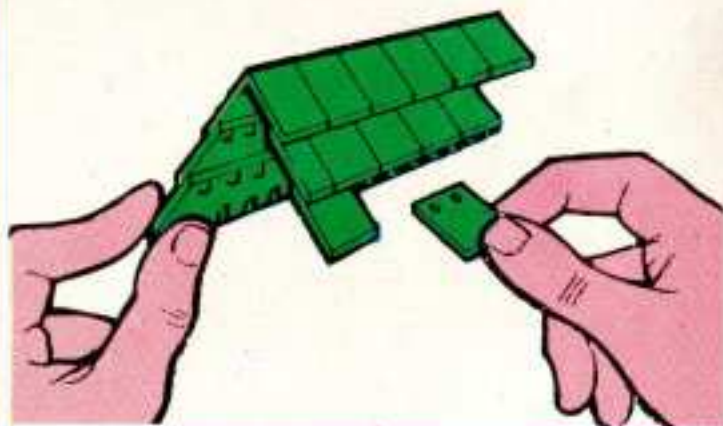
Bases

Can be used for balconies, flat roofs & internal floors.



Doors and windows

To build a sloping roof, start with enough 'V' ridge tiles to cover the full length of the building plus the overlaps.



This is how to build an 'L' type roof with angled end.

Snap in your windows into frames before assembling.

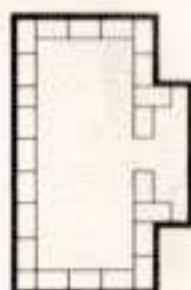




Cottage with Porch
Starter Set only



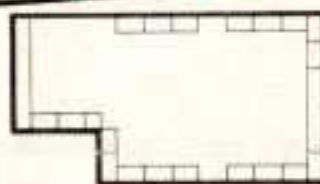
Cottage with Patio
Starter Set plus
Acc. Pack No. 2



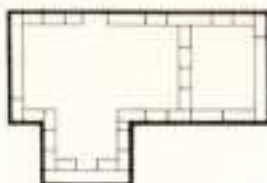
**Cottage with
integral garage**
Betta Bilda Set
No. 1 only



**Bungalow with
attached garage**
Betta Bilda Set
No. 1 only



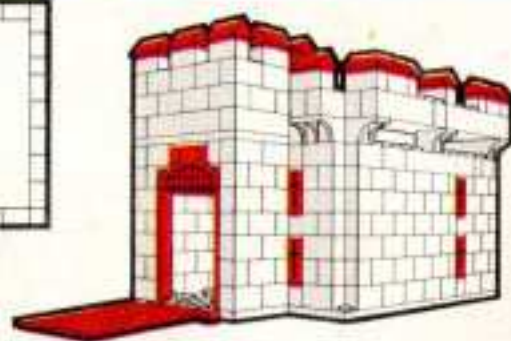
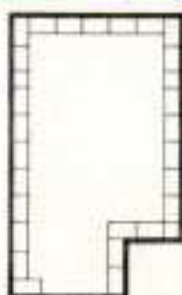
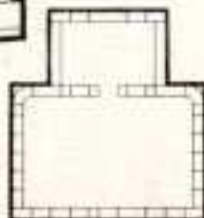
**Bungalow with Porch
and integral garage**
Betta Bilda Set No. 1
plus Acc. Pack No. 4



**BETTA BILDA
NO. 1 SET.**
Starts you creating
interesting buildings with
lots of special features.
Over 350 pieces.

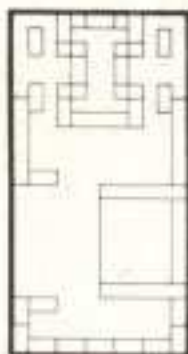


Villa
Betta Bilda Set No. 1
plus Acc. Packs No. 12,
No. 13 (twice)

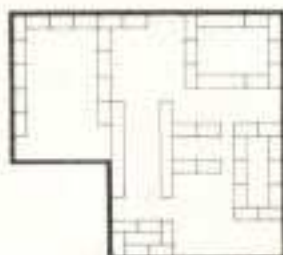
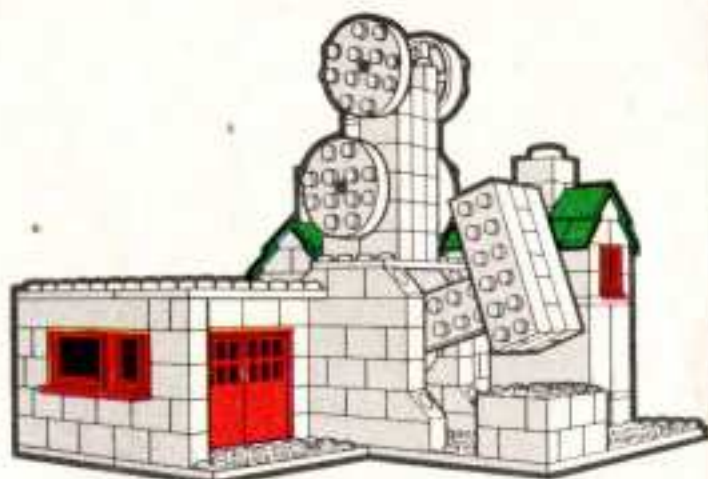


Castle
Betta Bilda Set No. 1 plus
Acc. Packs No. 2 (twice)
No. 10 (twice) No. 12.





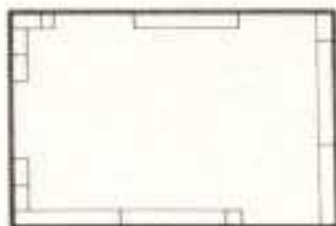
Modern Office Block
Betta Bilda Set. No. 1
plus Acc. Packs No. 2,
No. 4, No. 9 (three times)



Forge
Betta Bilda Set No. 1
plus Acc. Packs No. 2,
No. 11 (No. 16 motorised
unit optional)



**2 Storey House
and integral garage**
Betta Bilda Set No. 2 only

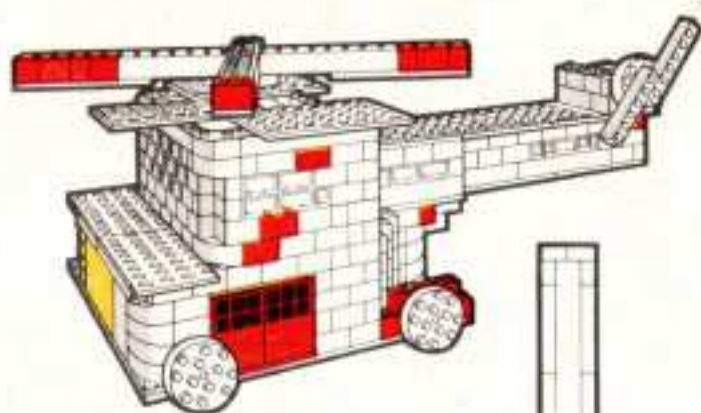


**2 Storey House and
attached garage**
Betta Bilda Set. No. 2
plus Acc. Pack No. 4

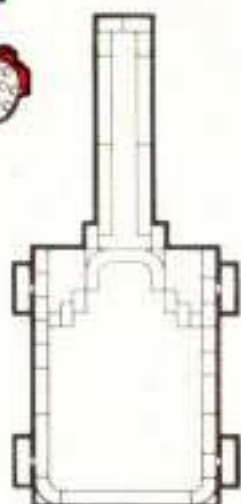


BETTA BILDA NO. 2 SET.
Gives you still more
parts, to make still better
models. Over 650 pieces.

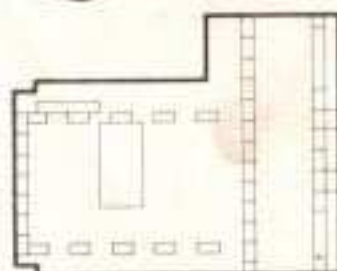




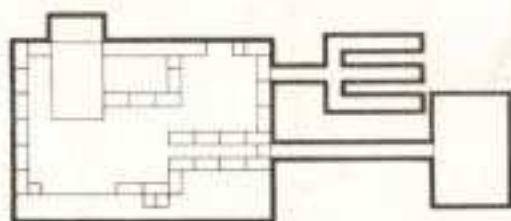
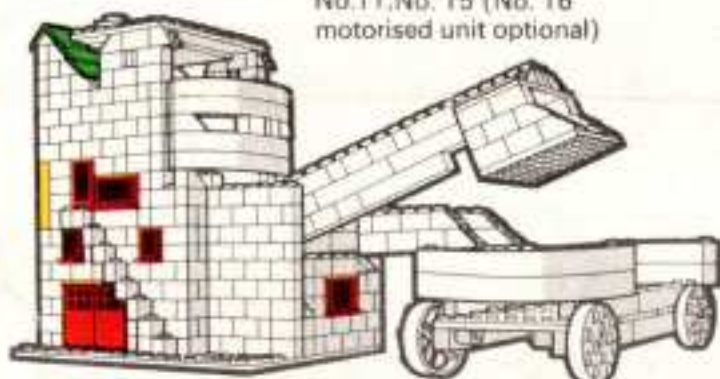
Helicopter
Betta Bilda Set No. 2
plus Acc. Pack No. 11
(No. 16 motorised
unit optional)



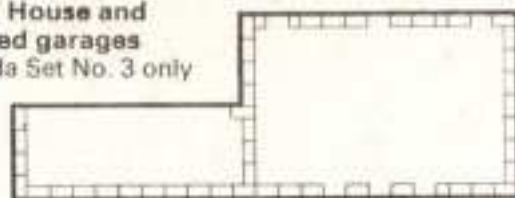
Water Mill
Betta Bilda Set No. 2
plus Acc. Pack No. 15
(No. 16 motorised
unit optional)



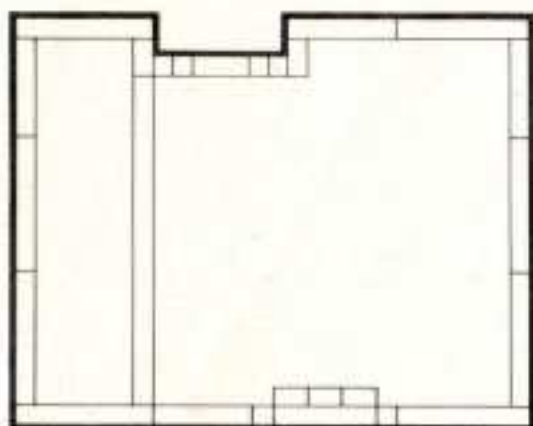
Muck Shifter
Betta Bilda Set No. 2
plus Acc. Packs No. 2,
No.11, No. 15 (No. 16
motorised unit optional)



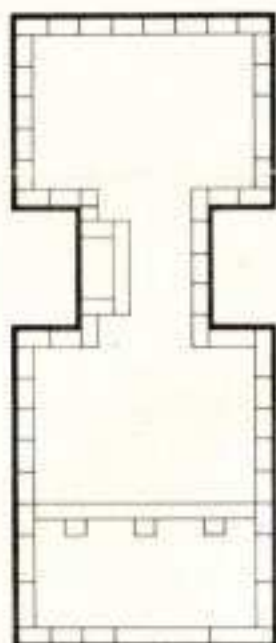
**2 Storey House and
3 attached garages**
Betta Bilda Set No. 3 only



Single Storey House with
3 attached garages
Betta Bilda Set No. 3 plus Acc.
Packs No. 4, No. 7 (twice)



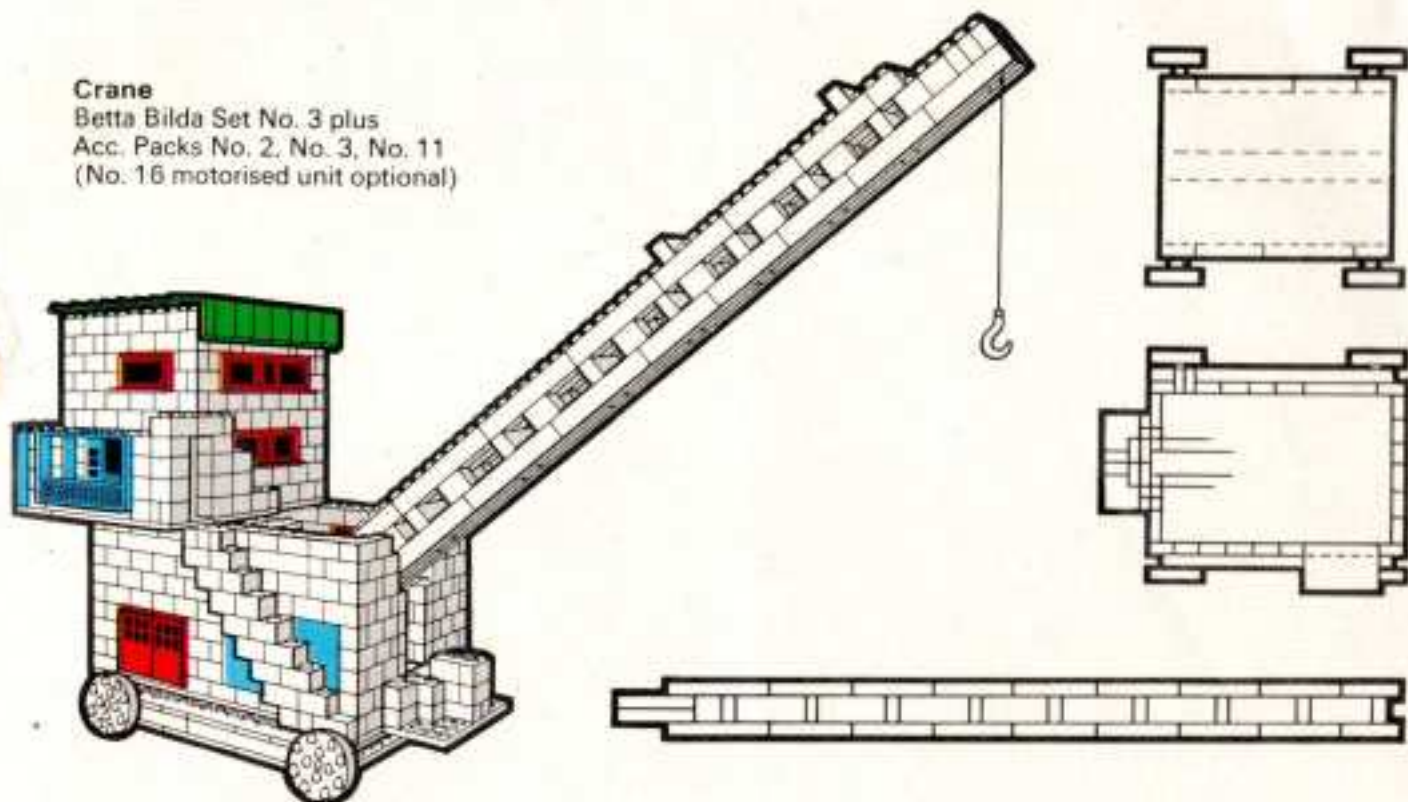
Single Storey 'H' Plan House
Betta Bilda Set No. 3 plus
Acc. Packs No. 7, No. 8 (twice)



BETTA BILDA NO. 3 SET. Enables you to
build even bigger, higher, and more adventurous
buildings. Over 1050 pieces.

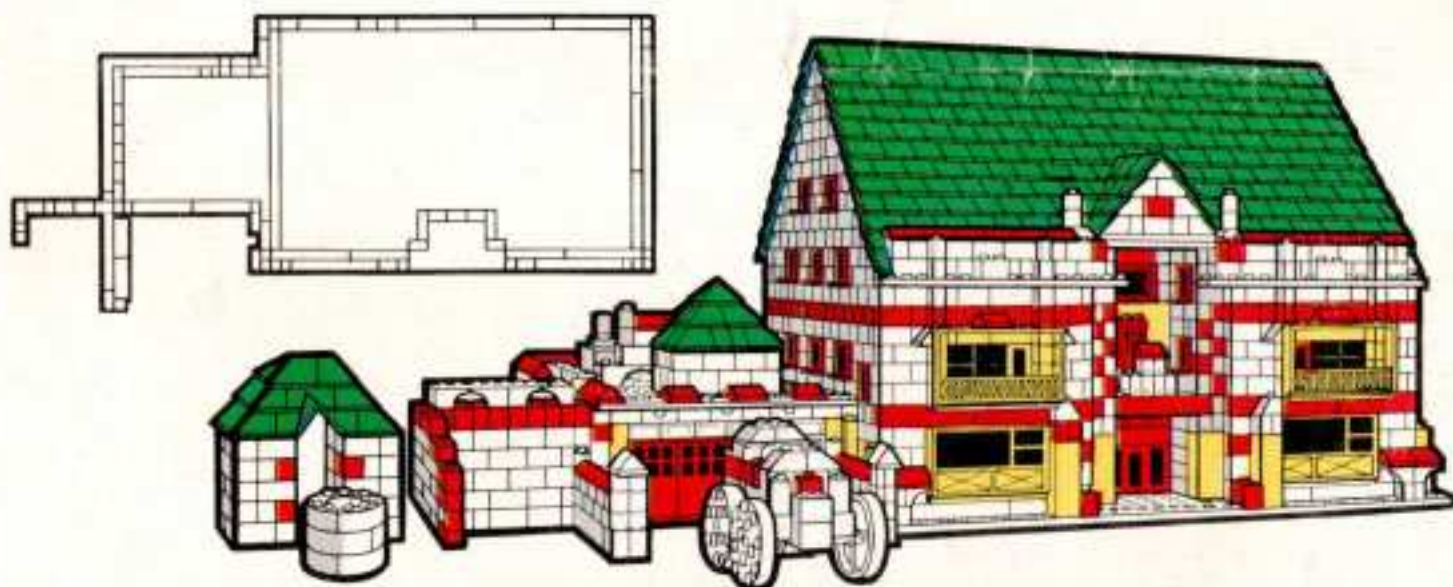
Crane

Betta Bilda Set No. 3 plus
Acc. Packs No. 2, No. 3, No. 11
(No. 16 motorised unit optional)

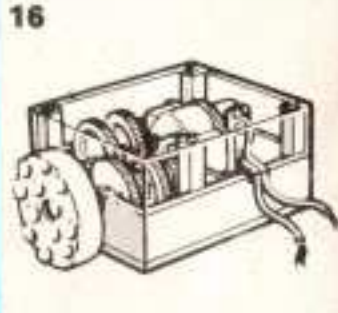
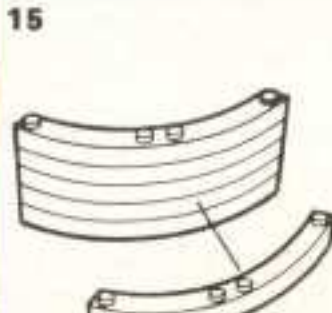
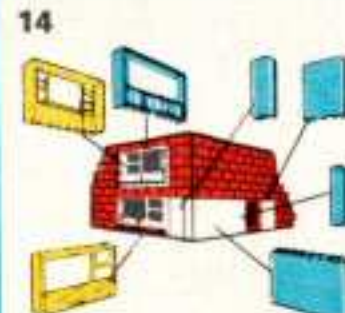
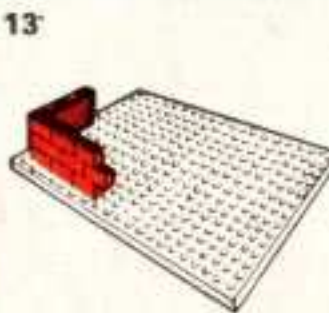
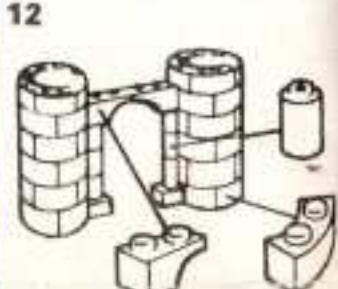
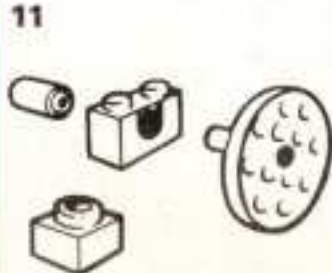
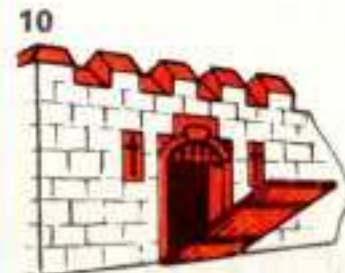
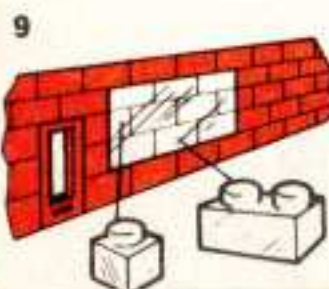
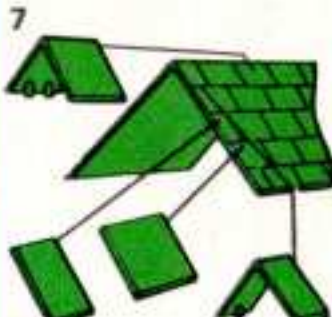
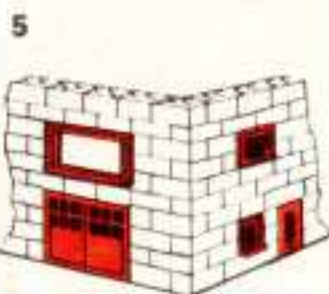
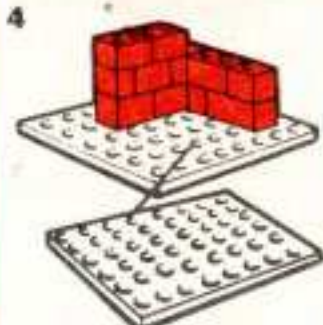
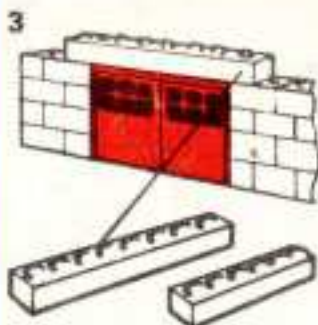
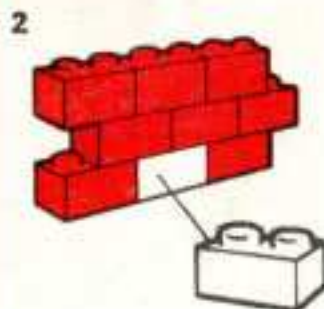
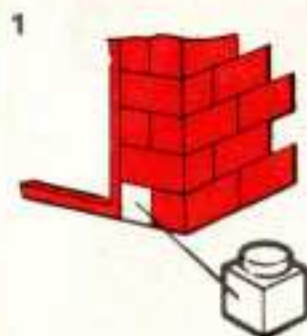


Country Estate House

Betta Bilda Set No. 4 plus
Acc. Packs No. 7 (twice)



BETTA BILDA NO. 4 SET. Extends your range still further. Yet the principle remains as simple as ever. Single units grow into majestic models. Over 1850 pieces.



AIRFIX ACCESSORIES GIVE EXTRA FUN

- 1 70 half bricks in red or white.
- 2 50 full bricks in red or white.
- 3 14 assorted beams, 7 long, 7 medium, in red or white.
- 4 7 assorted white bases - 3 large, 2 medium, 2 small.
- 5 15-piece assortment of doors and glazed windows including 1 garage frame and double doors in red, and blue.
- 6 40 gable ends and 4 apex sections in red or white.
- 7 77 assorted tiles, 62 full tiles, 6 half-tiles, 7 full V-ridge tiles, 2 half V-ridge tiles and 1 chimney. In red and green.
- 8 44 assorted Dormer type roofing accessories, in red and green.
- 9 54 assorted clear bricks, 40 full, 14 half.
- 10 52 assorted Castle accessories in red, 1 gateway, 1 drawbridge,

- 36 battlement copings, 10 corner battlement copings, 4 firing slots.
- 11 22-piece wheel set in white, 6 wheels, 8 axles, 6 axle bricks, 2 centre pivots.
- 12 54 assorted white bricks, 18 curved, 6 curved with cut outs, 12 half arch, 18 pillars.
- 13 1 large base suitable for large buildings, roofing, floors etc., size 6 1/4" x 4 1/4".
- 14 11 pieces comprising 1 glazed wall unit, 1 glazed wall and door unit, 1 balcony unit and 6 assorted wall sections.
- 15 8 long white curved bricks for making large diameter wheels or provide curved ends to model buildings.
- 16 Battery motorised unit. Ideal for mobilising Betta Bilda models.



'CHIPPY' the perky little character says - "The more pieces and accessories you have, the more fun you get out of building".

